

CAVITY

EXTERIOR GYPSUM SHEATHING

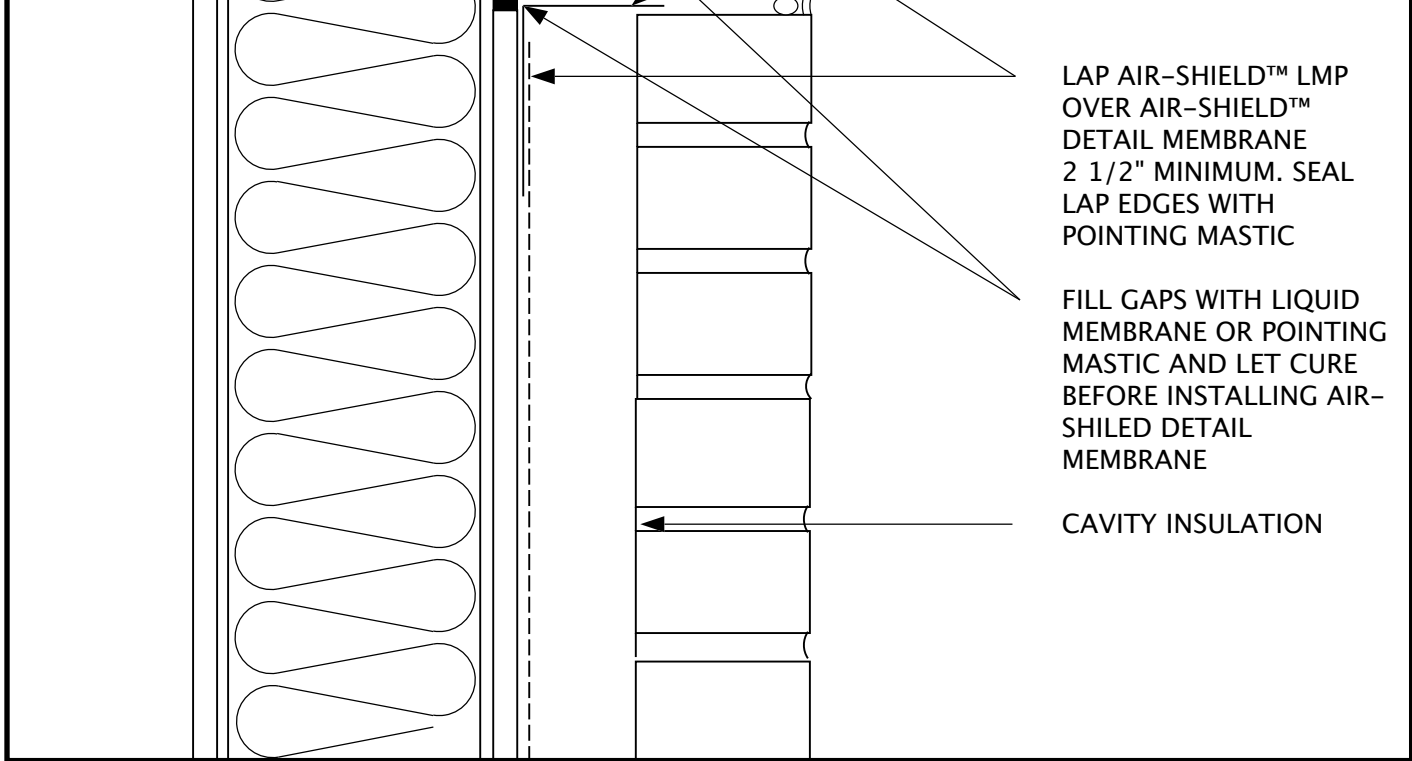
AIR-SHIELD™ LMP

BRICK VENEER

INTERIOR GWB

LGMF

AIR-SHIELD™ DETAIL MEMBRANE



LAP AIR-SHIELD™ LMP OVER AIR-SHIELD™ DETAIL MEMBRANE 2 1/2" MINIMUM. SEAL LAP EDGES WITH POINTING MASTIC

FILL GAPS WITH LIQUID MEMBRANE OR POINTING MASTIC AND LET CURE BEFORE INSTALLING AIR-SHIELDED DETAIL MEMBRANE

CAVITY INSULATION

W. R. Meadows, Inc.
 300 Industrial Drive
 Hampshire, IL 60140-0338
 1-800-342-5976
 www.wrmeadows.com

SKETCH: **AIR-SHIELD™**
WALL PENETRATION
LGMF BU

SKETCH NO: **LMP-27**

DATE: **6/26/06**